

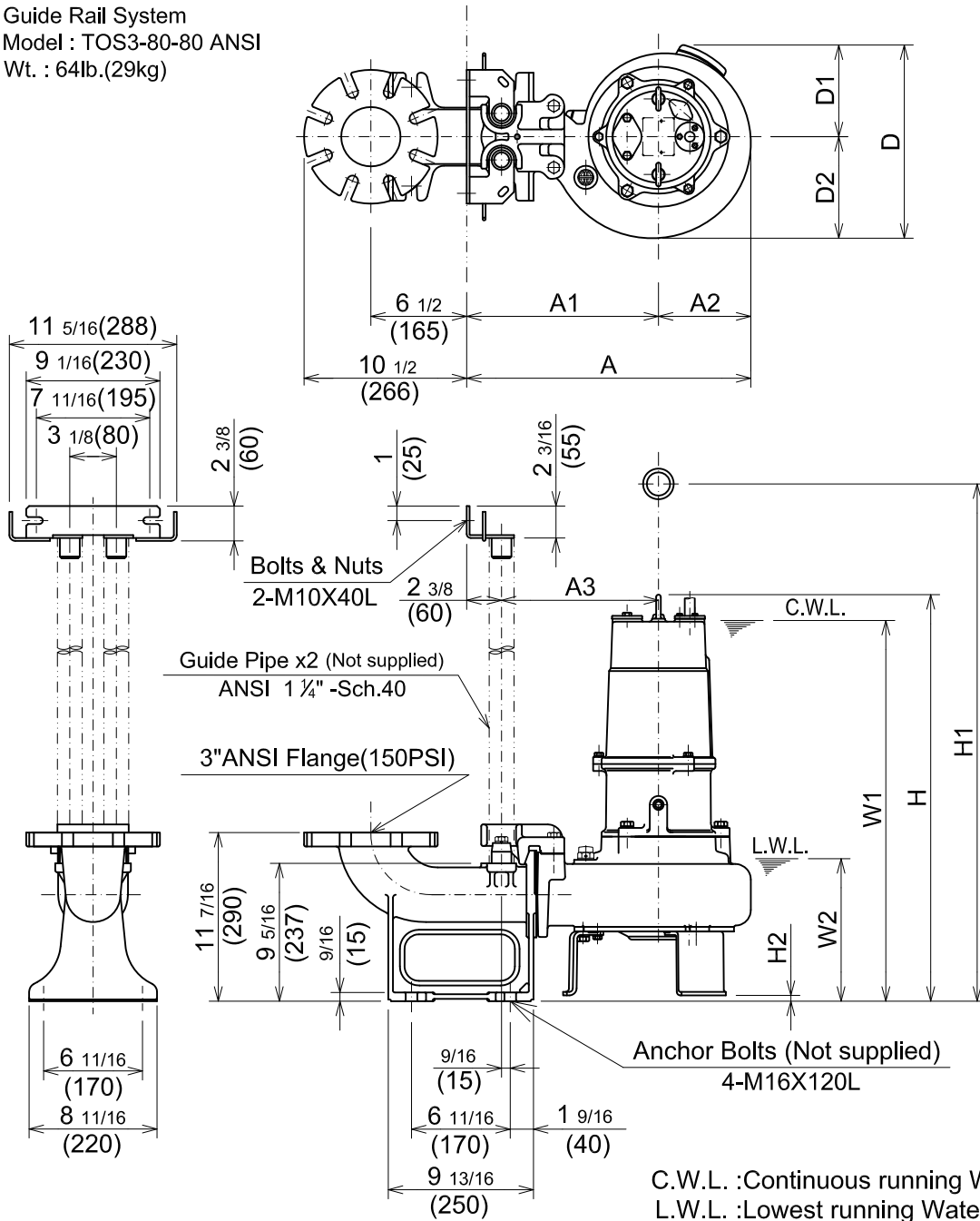


**C-SERIES**  
**CUTTER - TYPE - SEWAGE & WASTEWATER PUMPS**

**DIMENSIONS**

**TOS100C43.7-CR -63 (3"Dis.)**

Guide Rail System  
Model : TOS3-80-80 ANSI  
Wt. : 64lb.(29kg)



C.W.L. :Continuous running Water Level  
L.W.L. :Lowest running Water Level

**DIMENSIONS:USCS(Inch)**

Model	HP	NOM. SIZE	Pump & Motor									C.W.L. W1	L.W.L. W2	*Wt. (lbs.)	
			A	A1	A2	A3	D	D1	D2	H	H1				H2
TOS100C43.7-CR -63	5	3"	19 1/4	13	6 1/4	10 5/8	13 1/8	6 7/16	6 1/4	27 9/16	33 7/8	3/8	25 3/4	9 5/8	176

**DIMENSIONS:METRIC(mm)**

Model	kW	NOM. SIZE	Pump & Motor									C.W.L. W1	L.W.L. W2	*Wt. (kg)	
			A	A1	A2	A3	D	D1	D2	H	H1				H2
TOS100C43.7-CR -63	3.7	80	489	330	159	270	333	158	175	700	860	10	655	245	80

\*Excluding TOS & Cable.